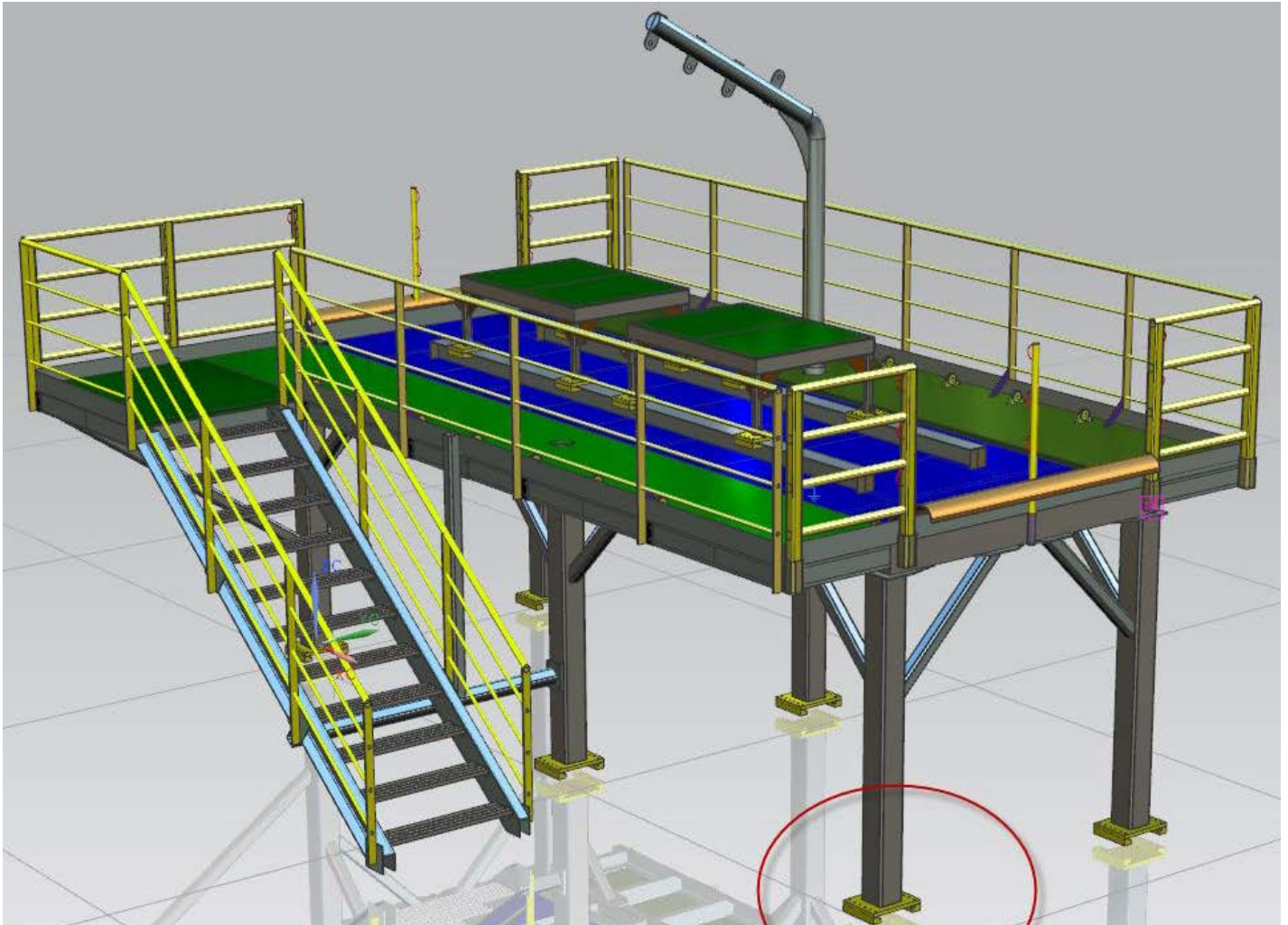




Technical Summary

Max gross weight:	13.5 tons (7.5 tons load)
Weight:	6.0 tons
Dimensions:	7255 x 4178 x 3574 [mm]
Built:	2012

Purpose built platform for safely and effectively performing umbilical splicing / repair operations on vessel deck. To be used in conjunction with reel and chute.



Construction

Material:	Carbon steel
Surface coating:	NORSOK M-501

Design code:	DNV-OS-C101 DNV-OS-C401 DNV-OS-B101 DNV 2.7-3
---------------------	--

Features

- ✓ Has two skidding work tables with friction clamps.
- ✓ Designed to be fastened onto vessel skidding beams with clamps.
- ✓ Has a convenient davit certified for 500 kg SWL
- ✓ Is delivered with a certified 4-part lifting sling

Available documentation on request

- ✓ Drawings for sea fastening
- ✓ Welding procedure specification
- ✓ Lifting certificate
- ✓ Material certificates
- ✓ Design calculation report